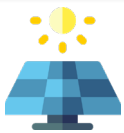


LEDS GP CLIMATE HELPDESK

As COVID-19 sweeps the world, governments across the globe are making decisions the impacts of which will be felt for generations. In order to help ensure that governments have the support they need to foster their climate actions, the **LEDS-GP Climate Helpdesk** is standing by to provide government officials at the national and subnational levels and regulators direct, no-cost, remote and short-term technical assistance* in their efforts to design and implement cleaner and smarter crisis recovery strategies.

HERE IS A SNAPSHOT OF SOME OF THE AREAS WHERE THE CLIMATE HELPDESK CAN HELP:



IN THE POWER SECTOR

- Designing and implementing smarter policies for distributed renewables
- Improving power system integration practices to accommodate rising shares of variable renewables;
- Designing and implementing longer-term visions for power sector transformation
- Revamping resilience and disaster preparedness practices to ensure electricity system reliability for critical infrastructure.



IN THE TRANSPORT SECTOR

- Designing and implementing reforms to road taxes, parking fees, and diesel and gasoline taxes to encourage more sustainable mobility choices
- Designing electric mobility strategies and policies
- Designing and implementing more sustainable urban transport infrastructure



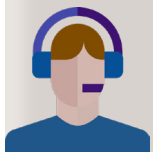
IN THE HEATING AND COOLING SECTOR

- Designing and implementing policies to increase investments in renewable cooling, in particular to reduce the demand peaks and avoid load shedding;
- Planning and developing district heating and cooling infrastructure;
- Designing and implementing policies and regulations for distributed heating and cooling technologies such as solar thermal technologies;



AFOLU

- Designing strategies to reduce emissions from deforestation and forest degradation (REDD+)
- Designing and implementing climate-smart agriculture policies
- Designing and implementing carbon accounting methods for agriculture



If you would like to submit a request* to the **LEDS GP Climate Helpdesk**, please send an email to climate.helpdesk@giz.de by the **23th of August** with a description of the support you envision and we will get in touch with you.

* Technical assistance is limited to 40 hours of advisory support and it can include a revision of a policy, providing recommendations or setting guidelines for policy implementation, leading to ambitious climate action. All requests will be subject to a selection process. Due to limited resources, only selected requests will be implemented.